



***In-Situ***

YOUR EYES IN THE FIELD

**WATER QUALITY**

**Instruments**

[www.in-situ.com](http://www.in-situ.com)

# APPLICATIONS

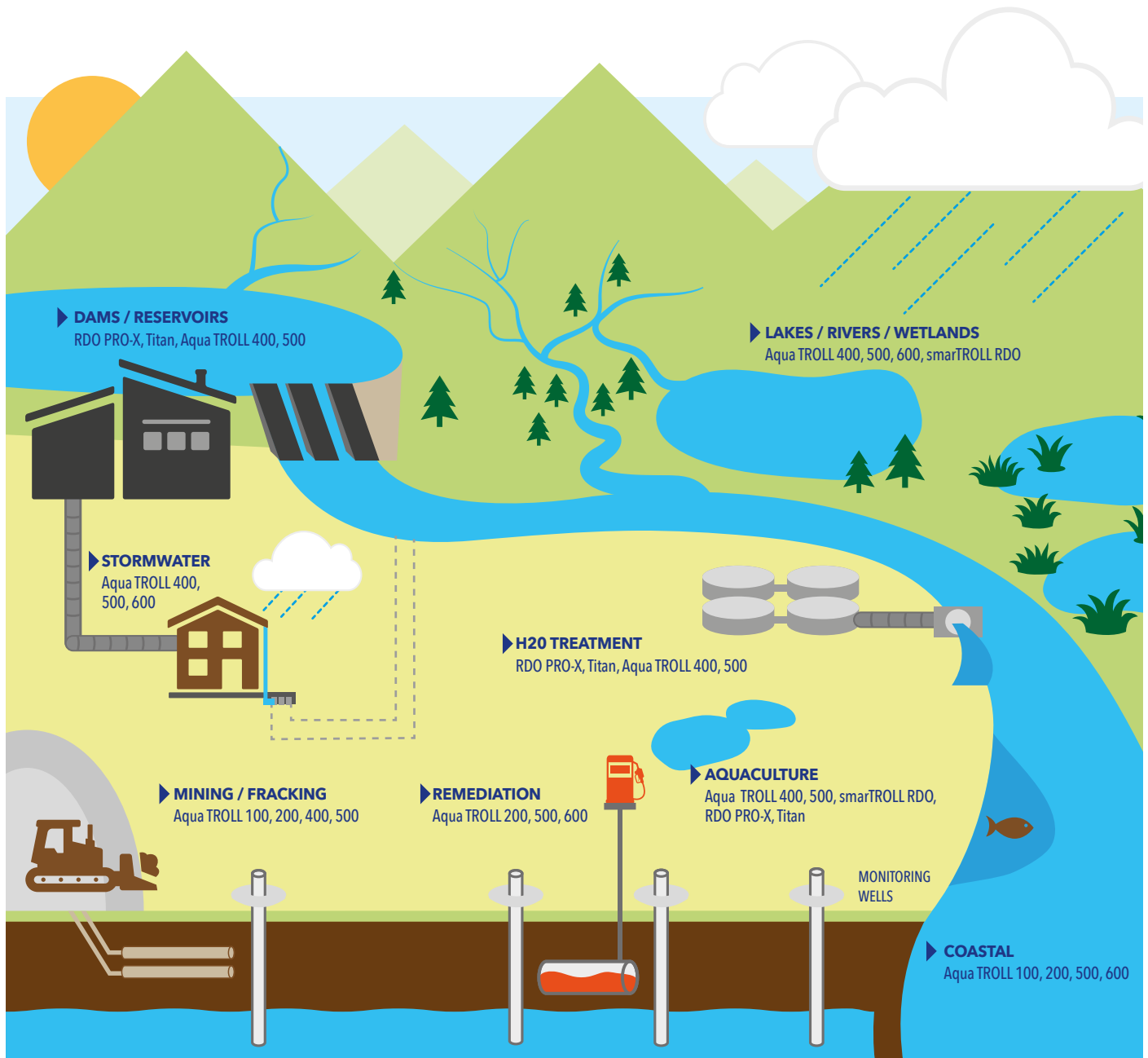
**RUGGED RELIABILITY, INTUITIVE SOFTWARE, AND SENSOR ACCURACY FROM CALIBRATION TO FIELD DEPLOYMENT MEAN THAT YOU CAN FOCUS ON GETTING THE JOB DONE RIGHT.**

In-Situ Inc. is a leading manufacturer of in-situ (on-site) water monitoring instruments for surface water and groundwater applications. Since 1976, we have provided water monitoring professionals with innovative solutions, such as the Aqua TROLL 500, with the industry's first mobile app, for environmental monitoring.

While we're known for high-accuracy water quantity, quality and flow instrumentation, we've expanded our portfolio of products and services to support remote access to decision-quality data via easy integration with VuLink™, our game-changing cellular and satellite telemetry device, and our cloud-based HydroVu™ Data Services platform.

Our growing water quality platform has been engineered for maximum reliability and minimum hassle. Internal data logging, extended battery life, drift-resistant sensors, and active and passive antifouling systems are some of the features that ensure years of performance in fresh water and saltwater applications. Quality equipment designed to work together, exceptional remote-monitoring capability, and simple integration with your systems lowers the total cost of ownership, reduces trips to the field, and makes data collection and analysis easier than ever.

Our team of experts can help you find the right solution for your project, and our support team is always standing by to offer complimentary, 24/7 technical support and mobile help in the field. We're also happy to rent our equipment to you, fully serviced, calibrated, and ready to go.



## Aqua TROLL® 600 Multiparameter Sonde



Customizable, powerful, and portable multiparameter sonde suitable for all applications. Internal power and data logging. Low power consumption with replaceable Alkaline D batteries for 9+ month life. Available sensor options include optical RDO, with EPA-approved RDO technology, pH/ORP, turbidity, conductivity, temperature, pressure, nitrate, chloride, ammonium, chlorophyll a, phycocyanin (BGA-PC), phycoerythrin (BGA-PE), rhodamine WT.

- Vented (gauged) or non-vented (absolute) pressure measurement
- LCD display for visual indication of overall probe functionality
- Sub-2 inch active and passive antifouling system with cleanable conductivity
- Wireless communication with smartphone interface
- Flexible communication protocols (4-20 mA, SDI-12, RS-485)



## Aqua TROLL® 500 Multiparameter Sonde



This cost-effective multiprobe combines highly stable sensors with automated wireless or wired data collection. Use this rugged instrument as a spot-checking handheld with our VuSitu Mobile App, or easily connect to telemetry or control system for long-term monitoring.

- Wet-mateable sensors and low-maintenance deployment reduce cost of ownership
- LCD display shows instrument health and wireless connectivity
- Automatic environmental compensation and simplified calibration
- Available sensor options: RDO, turbidity, conductivity, pH/ORP, temperature, pressure, nitrate, chloride, ammonium, chlorophyll a, phycocyanin (BGA-PC), phycoerythrin (BGA-PE), rhodamine WT

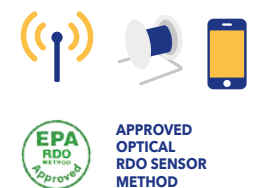


## Aqua TROLL® 400 Multiparameter Probe

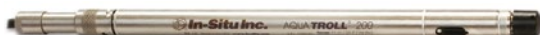


Compact and durable multiparameter process probe that continuously measures 12 water parameters in a variety of applications. Standard suite of six sensors measure actual and specific conductivity, salinity, total dissolved solids, resistivity, density, optical dissolved oxygen, ORP, pH, temperature, water level, and water pressure.

- DO readings automatically compensate for salinity
- Versatile power options and real-time readings (non-powered and non-logging)
- Modbus/RS485 or SDI-12 protocols
- Real-time data access with a radio, controller, data logger, sampler, telemetry system, or SCADA/PLC system
- Flexible communication protocols (4-20 mA, SDI-12, RS-485)



## Aqua TROLL® 200 Data Logger



Measures and records water level, pressure, conductivity, and temperature. Compact construction fits any deployment, and titanium electrodes and housing protect your data by preventing corrosion.

- Sub-1 inch diameter
- Full-range conductivity with optimum accuracy - 0 to 100,000  $\mu\text{S}/\text{cm}$
- Vented (gauged) or non-vented (absolute) pressure measurement
- Dynamic density compensation for accurate pressure measurement



# AQUA TROLL® AND RDO® INSTRUMENTS



## Aqua TROLL® 100 Data Logger



Measures and records conductivity and temperature. Compact construction fits any deployment, and titanium electrodes and housing protect your data by preventing corrosion.

- Sub-1 inch diameter
- Full-range conductivity with optimum accuracy
- 0 to 100,000  $\mu\text{S}/\text{cm}$
- Sealed to withstand pressure of up to 500 psi
- Flexible communication protocols (4-20 mA, SDI-12, RS-485)



## smarTROLL™ RDO® Handheld



Measures and records optical dissolved oxygen, air and water temperature, and barometric pressure. Data is transmitted wirelessly to your smartphone or tablet. Virtually no training required, and no calibration needed.

- Email and share real-time data on the spot
- Battery Pack with replaceable batteries (iOS) or rechargeable Power Pack (Android)
- Site tagging with photos and GPS coordinates
- RDO Fast Cap provides fast response for spot checking applications and reduces time in the field



APPROVED  
OPTICAL  
RDO SENSOR  
METHOD

## RDO® PRO-X Optical Dissolved Oxygen Probe



Measures optical dissolved oxygen and temperature using optical technology in process applications. No calibration, conditioning, or membranes required.

- Most accurate and rugged optical DO sensor on the market
- Only probe with diagnostic tools to evaluate sensor health
- Flexible communication protocols (4-20mA, Modbus/RS485, and SDI-12)
- Standard 10m cable or twist-lock options in custom cable lengths



APPROVED  
OPTICAL  
RDO SENSOR  
METHOD

## RDO® Titan Process Probe



Measures optical dissolved oxygen and temperature in process applications. Robust optical sensor requires no membranes and only minimal maintenance and calibrations.

- Most accurate DO probe on the market
- Titanium construction prevents corrosion in saline environments
- Long-lasting and easily replaceable smart sensor cap
- Custom cable lengths available



APPROVED  
OPTICAL  
RDO SENSOR  
METHOD

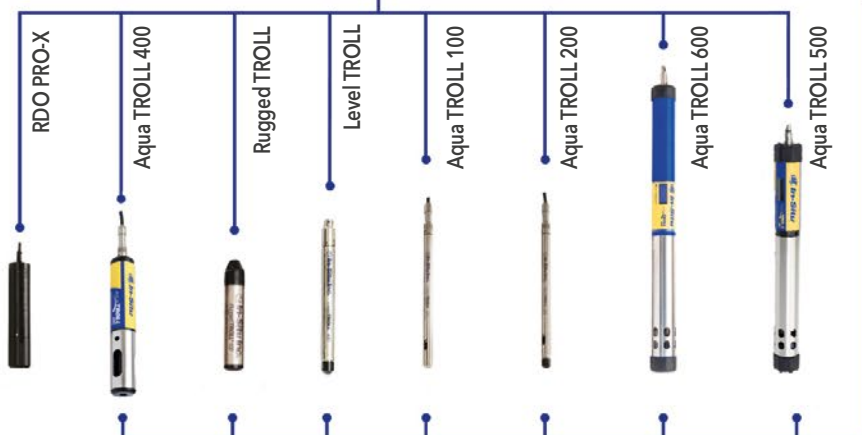
# REMOTE MONITORING SOLUTIONS

**HydroVu™**

**VuSitu™**



**VuLink™**



## DATA SERVICES

### HydroVu™ Data Services:

- Organize multiple projects, users, and instruments in one cloud-based location.
- Get secure, real-time access to decision-quality data anywhere, anytime.
- Simplify the task of filtering data for useful results.



## CELLULAR AND SATELLITE TELEMETRY

- In-well device features one-press set up, expanded coverage, and two-to-five times the battery life of other devices.
- Cellular coverage with 4G LTE Category M1/NB-IoT and 2G networks, or Iridium satellite coverage, futureproofs your system.
- Includes continuous GPS, encrypted connections, enhanced in-device alarms, desiccant-free operation, and IP68 waterproof rating.



## INSTRUMENTS

### Water Quality Instruments:

- Field-ready durability with accurate results in even the harshest applications.
- Easy-to-use spot checking handhelds with mobile device technology.
- Long-term monitoring probes with extended battery life and stable sensor technology.

# KEY FEATURES AND ACCESSORIES



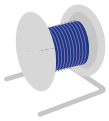
## ANTIFOULING

Dual-sided wiper or specially formulated copper guard prevents fouling around the probe's sensing area, in coastal environments and high-fouling sites, to improve accuracy and extend deployment.



## RDO FAST CAP

The fastest responding optical RDO sensor on the market, specifically designed for spot-checking applications. When the cap expires, simply snap it off and pop on a new one.



## RUGGED CABLE SYSTEM

Durable, long-lasting cables come in custom lengths and provide real-time data communication. Manufactured to endure harsh environments, they deliver accuracy, precision, and reliability for years. Patented twist-lock connectors provide easy attachment and detachment and protect your investment.



## TELEMETRY CAPABLE

Remote monitoring made easy with secure and reliable in-well telemetry, featuring setup with one button press, global cellular and satellite coverage, and extraordinary power savings. Both alkaline and lithium batteries supported.



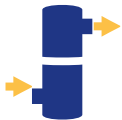
## INTERNAL BATTERY POWER

Replaceable alkaline or internally sealed lithium battery power for frequent, fast sampling or long-term deployments.



## INTERNAL DATA LOGGING

Internal data logging for continuous monitoring. Does not require an external data logger.



## LOW-FLOW SYSTEMS

Use your smartphone or tablet to automate the collection of well and pumping information, monitor and record the stabilization of key water quality parameters, and automatically generate calibration and sample reports to conform to federal and regional regulations.



## MOBILE APP FUNCTIONALITY

With the VuSitu™ Mobile App for Android and iOS, there's no need for expensive, bulky handheld computers to read your sensors. Use your smartphone or tablet to quickly find and recognize each of your sites, and instantly view, download, and share data.



## CALL OR CLICK TO PURCHASE OR RENT

1-800-446-7488 (toll-free in U.S.A. and Canada)  
1-970-498-1500 (U.S.A. and international)  
+44 (0) 121 733 7743 (Europe)

[www.in-situ.com](http://www.in-situ.com)

In-Situ Headquarters  
221 East Lincoln Avenue, Fort Collins,  
CO 80524 USA  
Copyright © 2020 In-Situ Inc.  
All rights reserved. March 2020.

In-Situ Europe Ltd  
Unit 24 Thornhill Road  
North Moons Moat, Redditch, Worcs.  
B98 9ND  
United Kingdom.