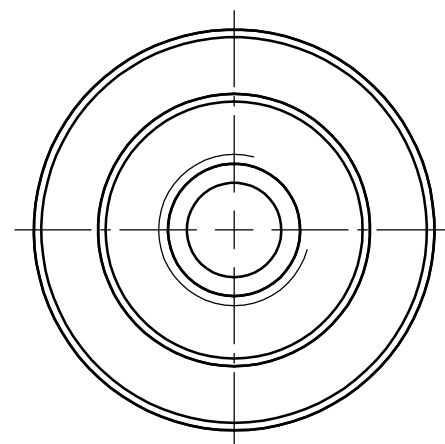
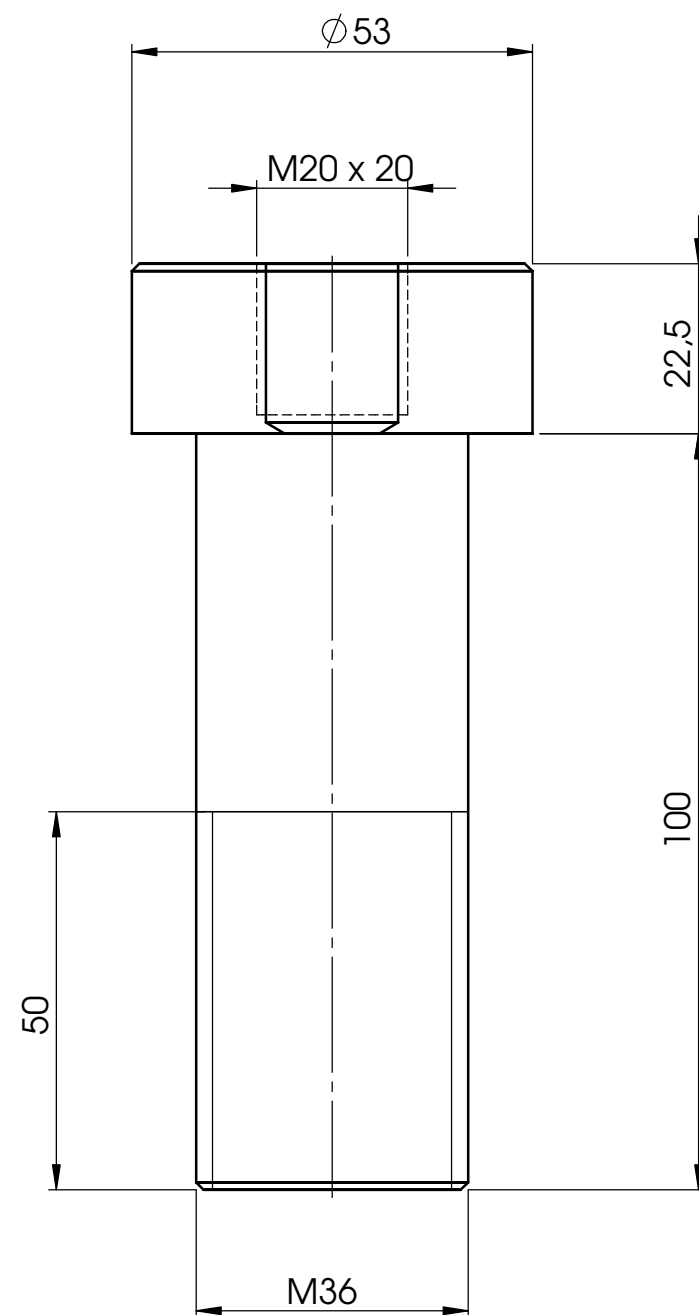
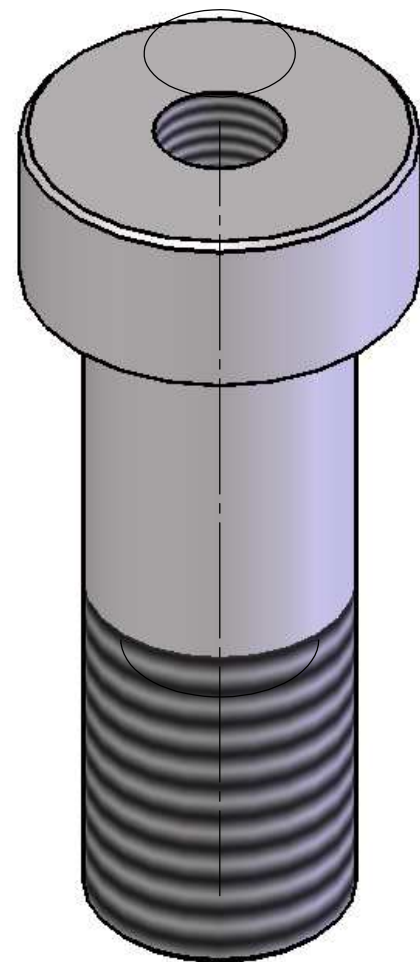
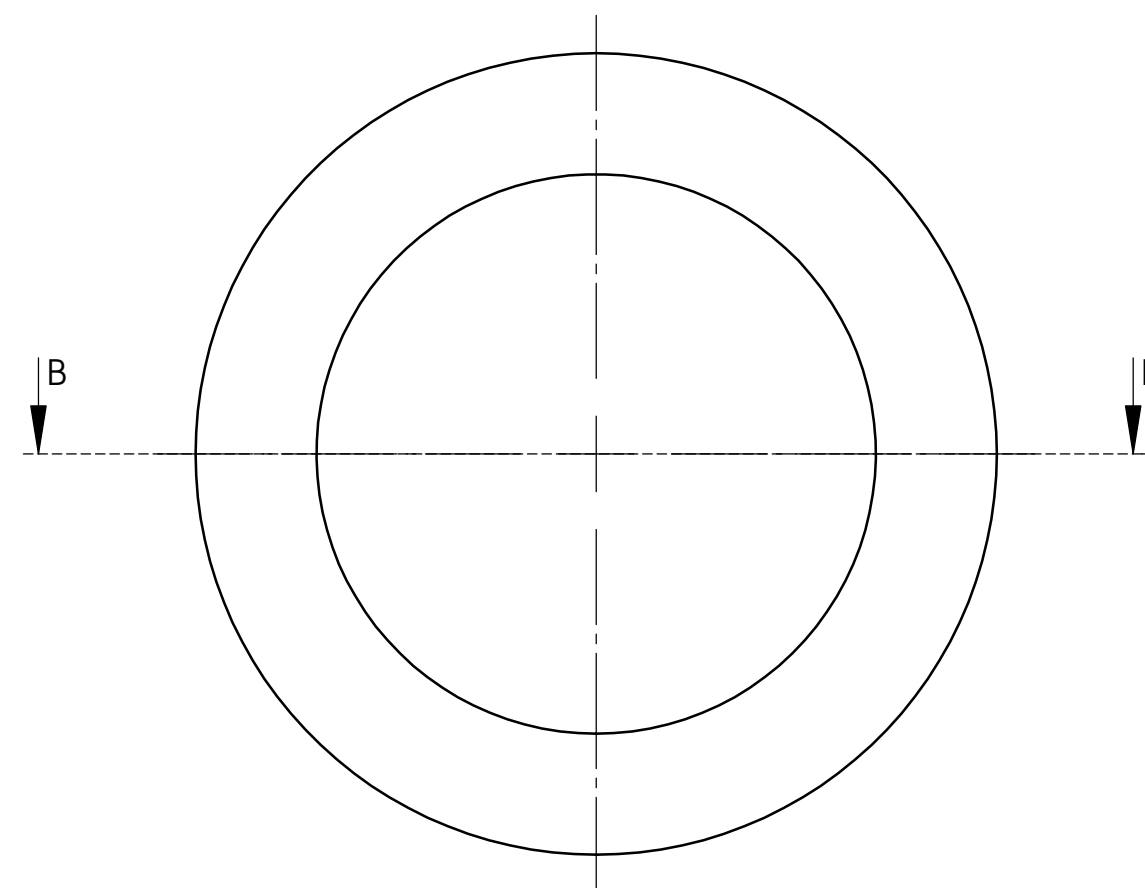
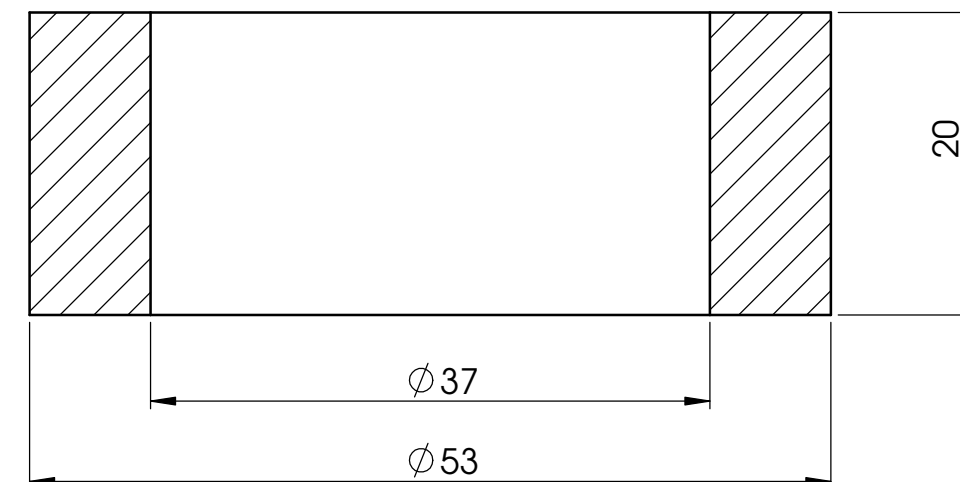


All dimensions in mm.

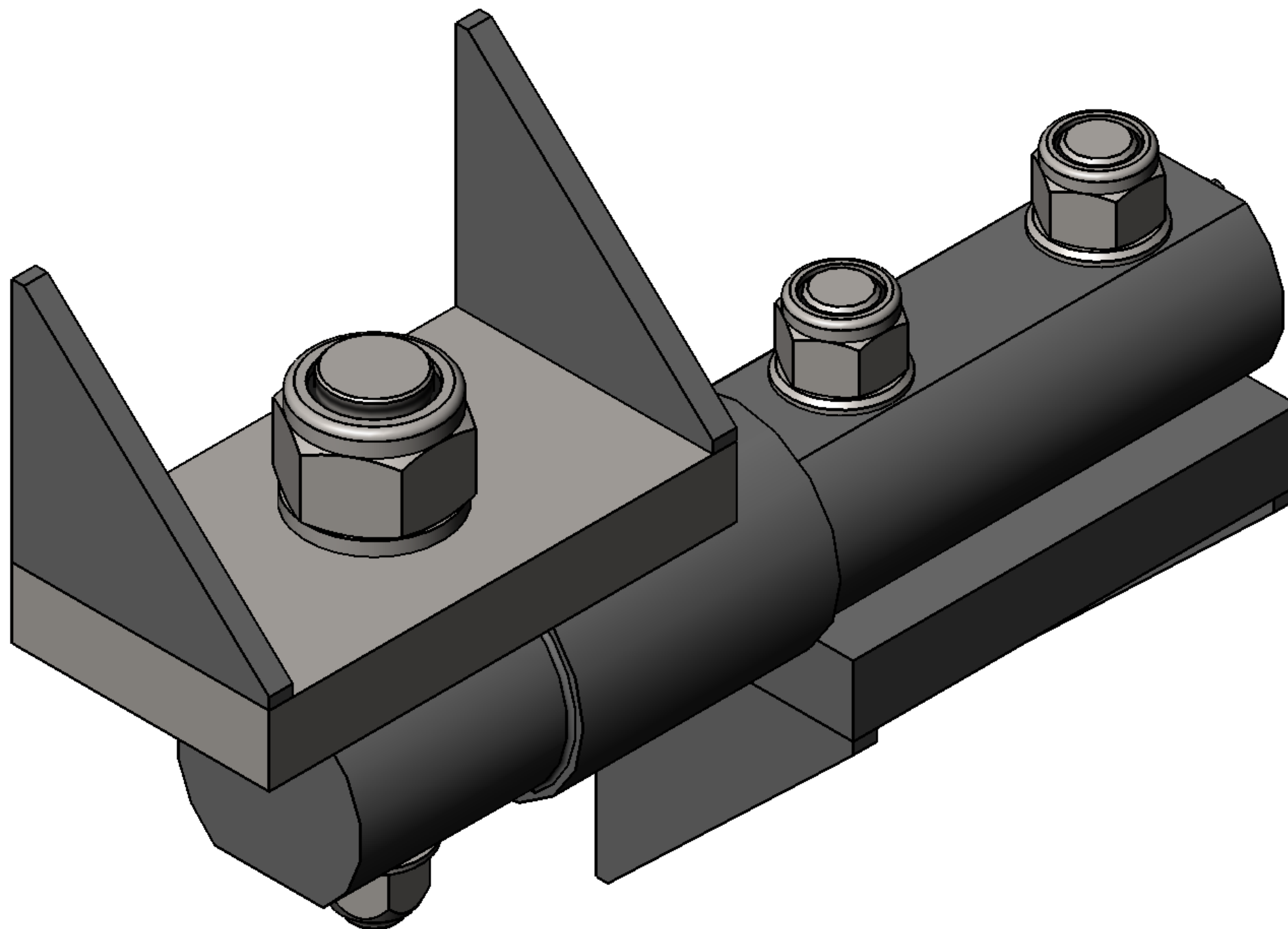
Description: SDM80 Fixed Inverted Rev 3				Drawing no.:		Part rev.:		Drawing rev.: 3	
Sign.:	LF	Drawn date:	28-04-2014	Weight:		Scale:	1:5	A3	
Rev. sign:		Rev. date:		<div>Eilersen</div> <div>The Weighing Experts</div> <div>www.eilersen.com</div>					
Material:		Surface:							
Approved by:		Appr. date:							
Dimension without tolerance, follows DS/ISO 2768-m This drawing is the property of Rudeco, and is not to be copied or shown to third parties.									



B-B (2 : 1)



Description: SDM80 Fixed Inverted Rev 3				Drawing no.:		Part rev.:	Drawing rev.: 3
Sign.:	LF	Drawn date:	28-04-2014	Weight:		Scale:	1:2 A3
Rev. sign:		Rev. date:		<div><div>Eilersen</div><div>The Weighing Experts</div></div> <div>www.eilersen.com</div>			
Material:		Surface:					
Approved by:		Appr. date:					
Dimension without tolerance, follows DS/ISO 2768-m This drawing is the property of Rudeco, and is not to be copied or shown to third parties.							



Description: SDM80 Fixed Inverted Rev 3				Drawing no.:		Part rev.:	Drawing rev.: 3	
Sign.:	LF	Drawn date:	28-04-2014	Weight:		Scale:	1:5	A3
Rev. sign:		Rev. date:		<div><div>Eilersen</div><div>The Weighing Experts</div><div>www.eilersen.com</div></div>				
Material:		Surface:						
Approved by:		Appr. date:						
Dimension without tolerance, follows DS/ISO 2768-m This drawing is the property of Rudeco, and is not to be copied or shown to third parties.								