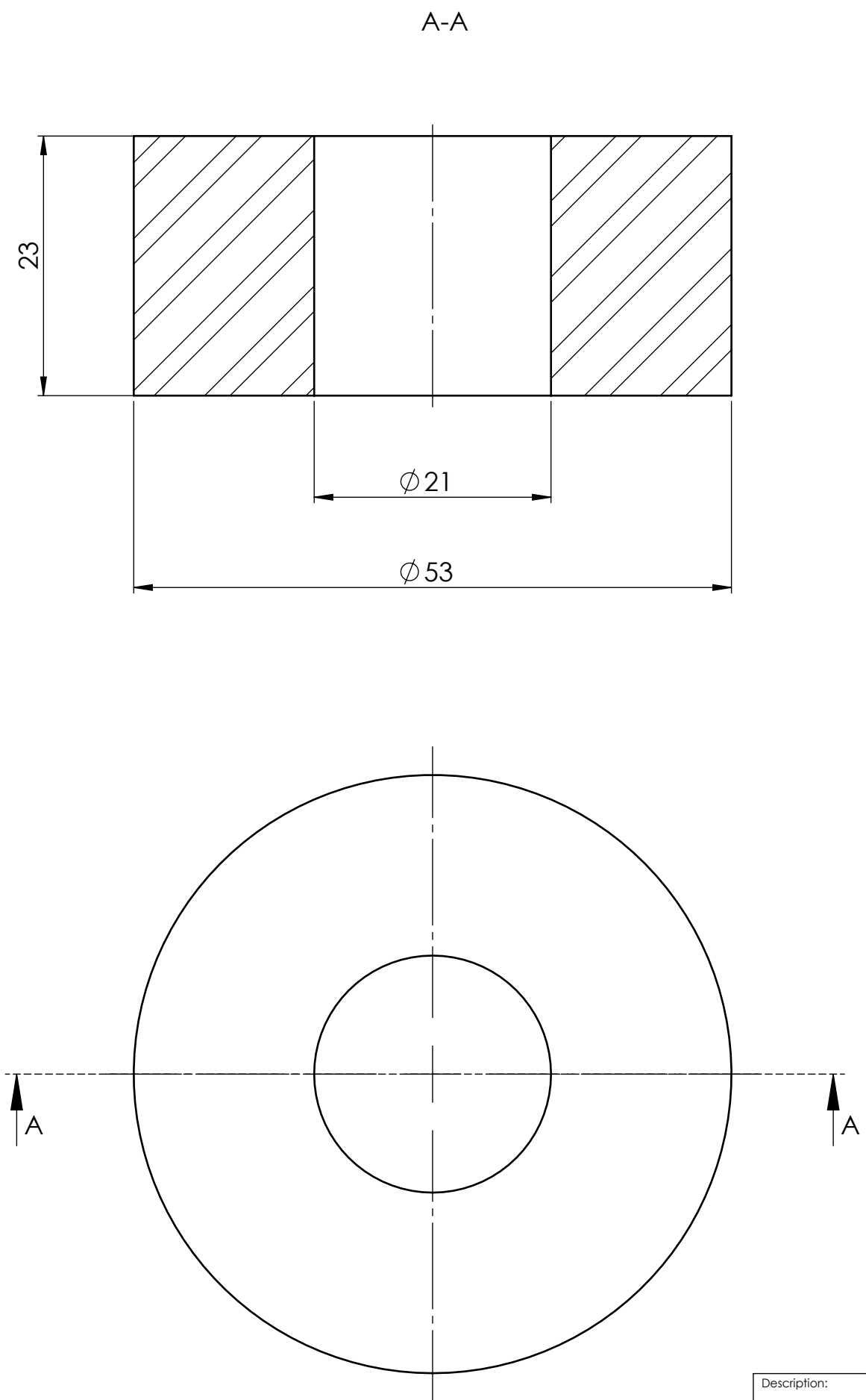
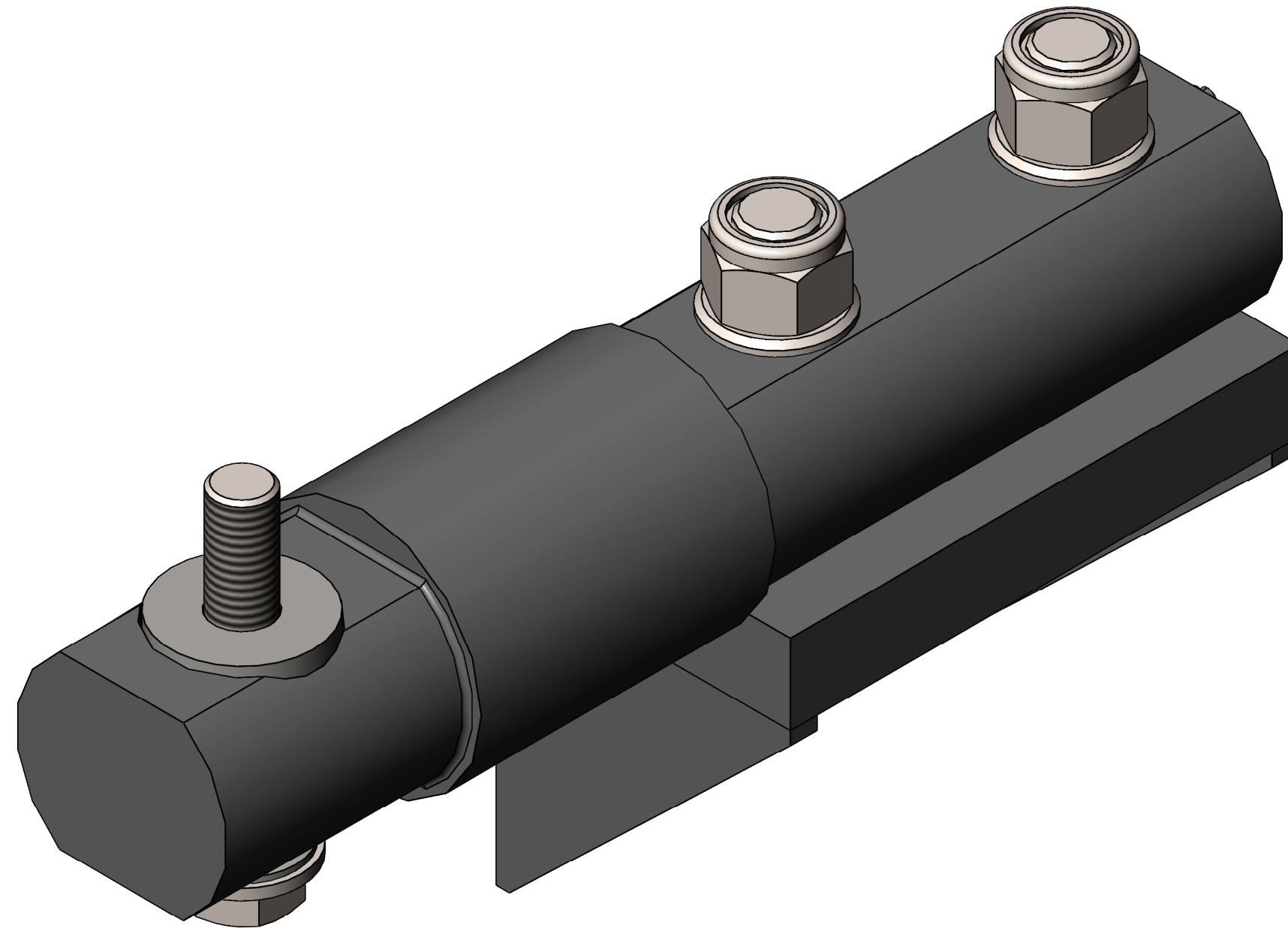


All dimensions in mm.

Description: Mounting kit for BM80 load cell				Drawing no.: BM80 Mounting kit		Part rev.: 		Drawing rev.: 4	
Sign.:	LF	Drawn date:	28-04-2014	Weight:			Scale:	1:5	A3
Rev. sign:	FJE	Rev. date:	30-10-2018	<div><div>Eilersen</div><div>The Weighing Experts</div></div> <div>www.eilersen.com</div>					
Material:		Surface:							
Approved by:		Appr. date:							
Dimension without tolerance, follows DS/ISO 2768-m This drawing is the property of Rudeco, and is not to be copied or shown to third parties.									



Description:				Drawing no.:		Part rev.:		Drawing rev.:	
Mounting kit for BM80 load cell				BM80 Mounting kit				4	
Sign.:	LF	Drawn date:	28-04-2014	Weight:			Scale:	2:1	A3
Rev. sign:	FJE	Rev. date:	30-10-2018	<div><div>Eilersen</div><div>The Weighing Experts</div><div>www.eilersen.com</div></div>					
Material:		Surface:							
Approved by:		Appr. date:							
Dimension without tolerance, follows DS/ISO 2768-m This drawing is the property of Rudeco, and is not to be copied or shown to third parties.									



Description:				Drawing no.:		Part rev.:		Drawing rev.:	
Mounting kit for BM80 load cell				BM80 Mounting kit				4	
Sign.:	LF	Drawn date:	28-04-2014	Weight:			Scale:	1:5	A3
Rev. sign:	FJE	Rev. date:	30-10-2018	<div><div>Eilersen</div><div>The Weighing Experts</div><div>www.eilersen.com</div></div>					
Material:		Surface:							
Approved by:		Appr. date:							
Dimension without tolerance, follows DS/ISO 2768-m This drawing is the property of Rudeco, and is not to be copied or shown to third parties.									